



TQI Series

Constant Pressure System

**ISO 9001
CERTIFIED**



TQI Series Constant Pressure System



The TQI Constant Pressure System consists of a pump and inverter that is designed for residential and commercial customers who need to boost their water pressure when water demand is high.

Applications:

Whether you have a municipal system or a storage tank system, TQI has a constant pressure solution for your home. It is suitable for:

- condos
- motels
- homes
- restaurants
- offices
- irrigation
- other boosting applications

Benefits

TQI system improves the way you use water and provide added value to your home. The system maintains a constant water pressure despite varying consumption.

Operation Conditions:

1. Ambient temperature: Max. +104°F (40°C)
2. Liquid temperature: +39°F (4°C) ~ +104°F (40°C)
3. Pressure sensor : 4-20 mA 2-wire output signal
4. Pumped liquids : It is suitable for pumping clean, thin and non-aggressive liquids.

Perfect solution for your water usage

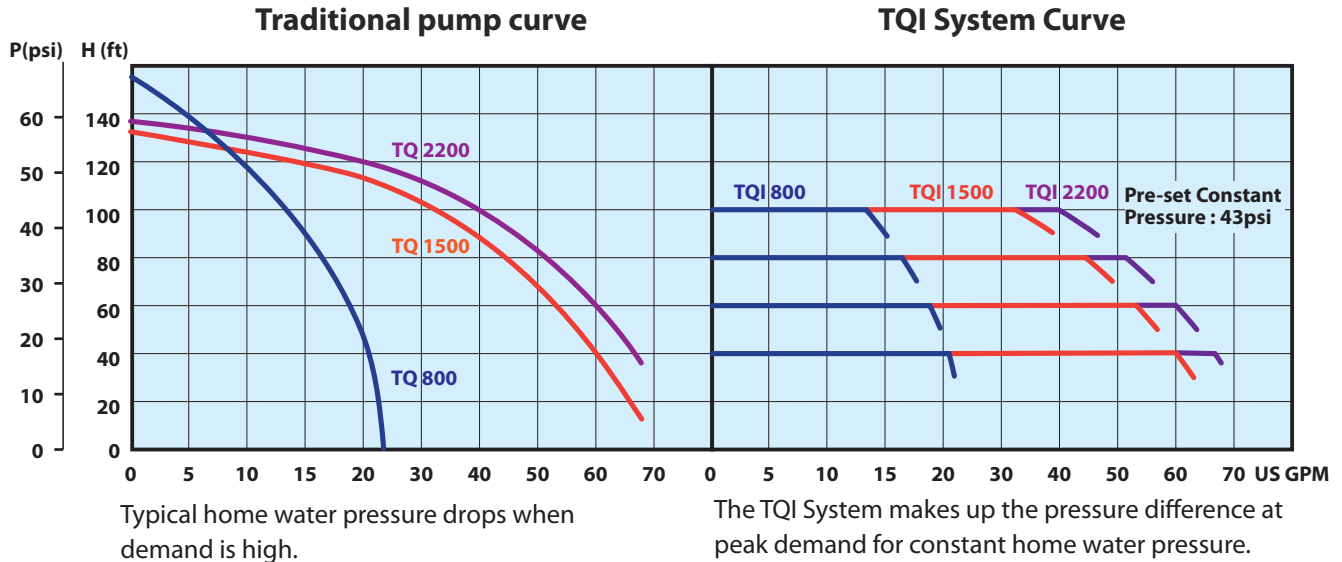
When install with the conventional pump for use of multiple sources of water such as toilet, tub, sink, dish washer, washing machine, sprinkles, etc. the pressure will fluctuate causing weak flow. With TQI adding to your home, it will change the speed of the pump to match demand, providing consistent water flow and constant pressure. This allows the home owner to comfortably use all water sources at the same time.

For households in the municipal district, the city pressure may not always be adequate especially when you have increased water use in your house or when it is at the peak water demand. By using a TQI system, it will vary the speed of the pump, and your water pressure will keep up with your demand.

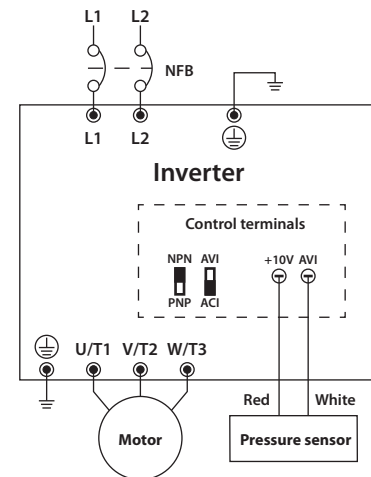
Features

- Compact in design for space saving
- Easy and adjustable pressure settings
- Pressure sensor transmits a digital signal to inverter
- Built-in pump system protection
- Easy installation, just wire pump to inverter.
- Pump has a built-in pressure tank.

The TQI System Advantage



Wiring diagram

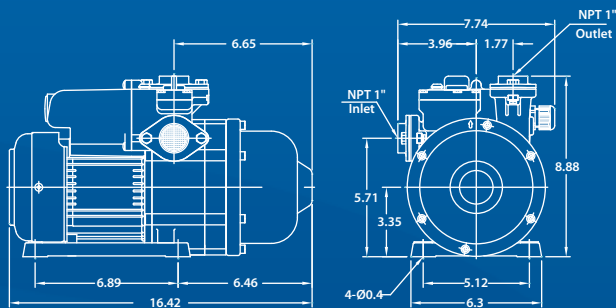


Specification

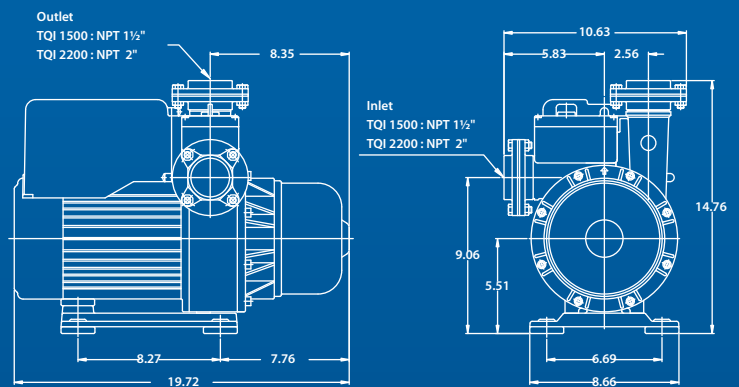
| Model | Power (HP) | Inverter Input | | Inverter Output | Inlet (NPT) | Outlet (NPT) | Preset Pressure (psi) | Q max. @43psi (GPM) | N.W. (lbs) |
|----------|------------|----------------|-------------|-----------------|-------------|--------------|-----------------------|---------------------|------------|
| | | Phase (Ø) | Voltage (V) | | | | | | |
| TQI 800 | 1 HP | 1 | 115 | 4.2 | 1" | 1" | 43 | 13 | 25.6 |
| | | 1 | 230 | 4.2 | | | | | |
| TQI 1500 | 2 HP | 1 | 230 | 7.5 | 1½" | 1½" | 43 | 32 | 62.8 |
| TQI 2200 | 3 HP | 1 | 230 | 11.0 | 2" | 2" | 43 | 40 | 68.3 |

Dimensions:

TQI 800



TQI 1500/ 2200



WALRUS

Walrus America Inc

20220 Hempstead Road, Suite #30, Houston, TX 77065

Phone: 281-955-8035 Fax: 281-955-8037

Web: www.walrusamerica.com