

Replacing TPCK Series mechanical seal

1. Removing mech seal.

WI-D3-S-B025E-1



Place the pump on work bench with motor down.



Remove the coupling cover.



Remove the coupling (#6 metric Allen wrench)



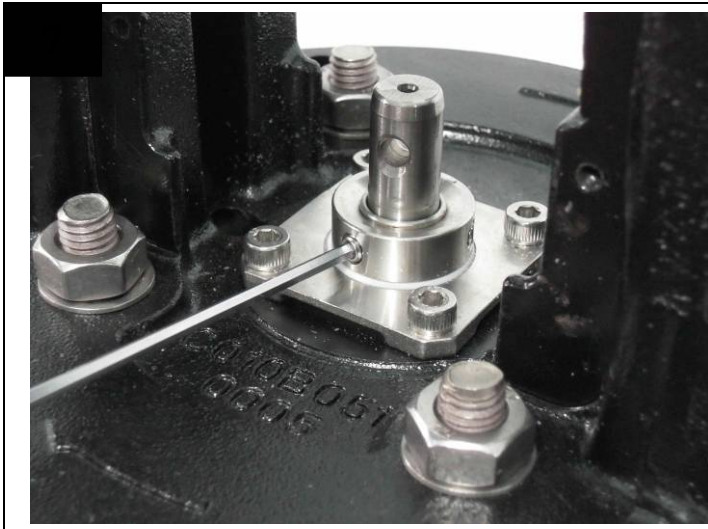
Loose the stud bolts (#6 Allen wrench) on the motor.



Separate the pump and motor.



Place the pump end on work bench.



Loose the stud bolts (#2.5 Allen wrench) on the mechanical seal.



Loose the stud bolts (#4 Allen wrench) on the mechanical seal.



Remove the mechanical seal.

2.Assembling mech seal.



Place the mechanical seal in position and press in



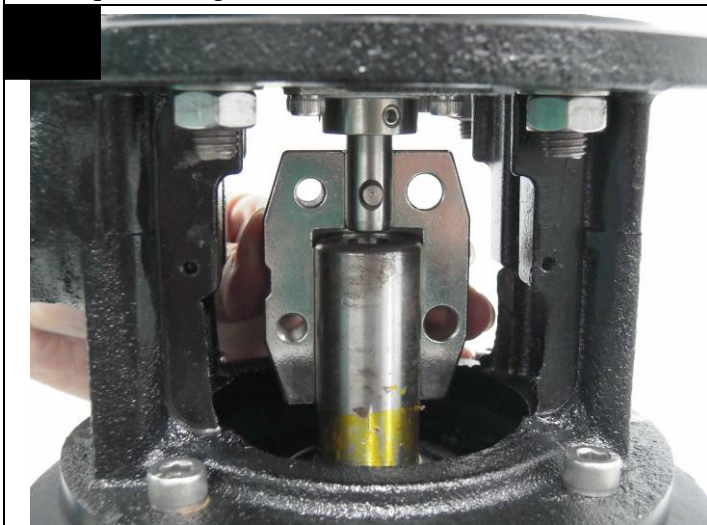
Tighten up the stud bolts on mechanical seal.
※torque 50 kgf · cm



Flip over the pump end and install it on the motor.
Make sure the pump discharge is on the opposite side
of motor terminal box.
※torque 180 kgf · cm



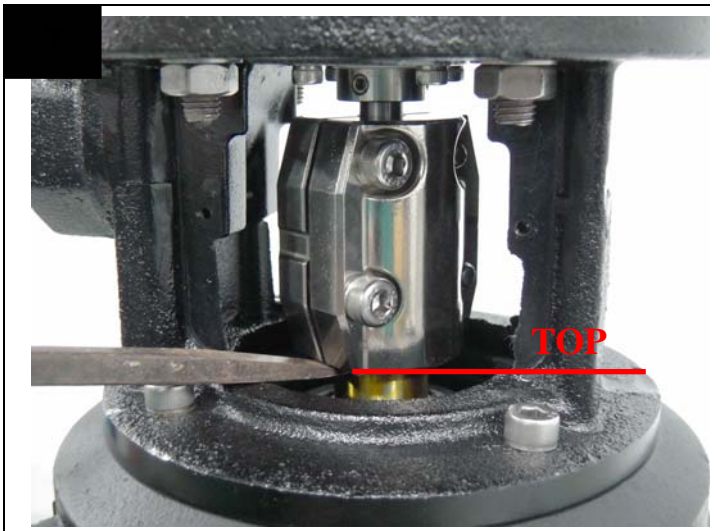
Insert the pin into half coupling.



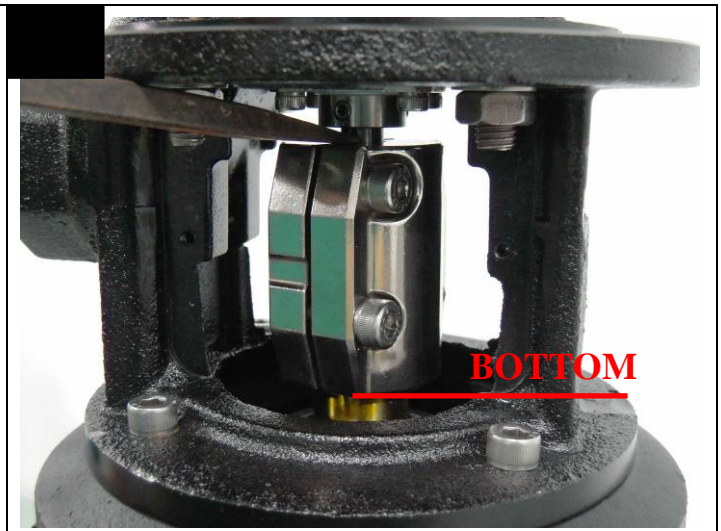
Install the coupling.



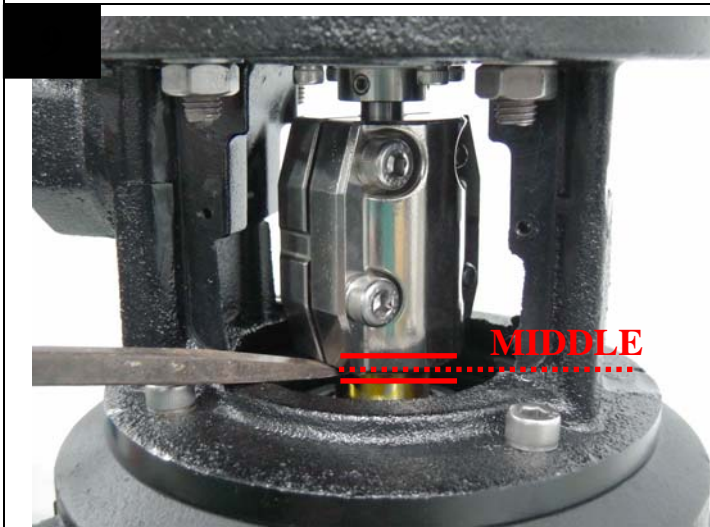
Place the stud bolts in but do not tighten up at this
stage.



Push the coupling to the top position with the tool.



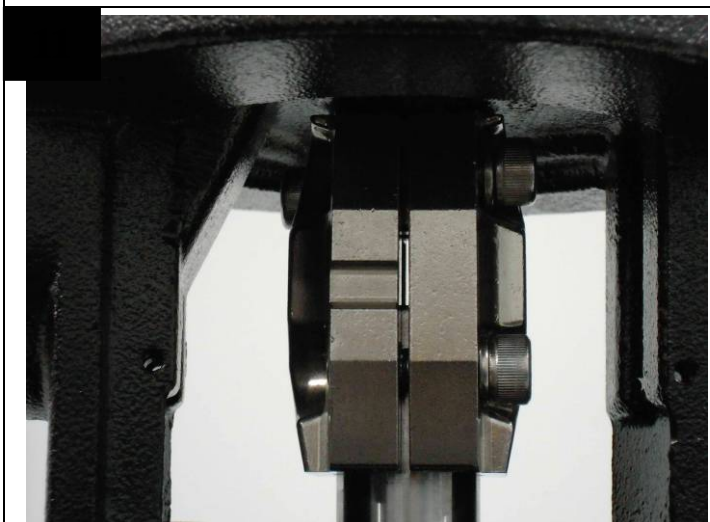
Move down the coupling to the bottom position with the tool.



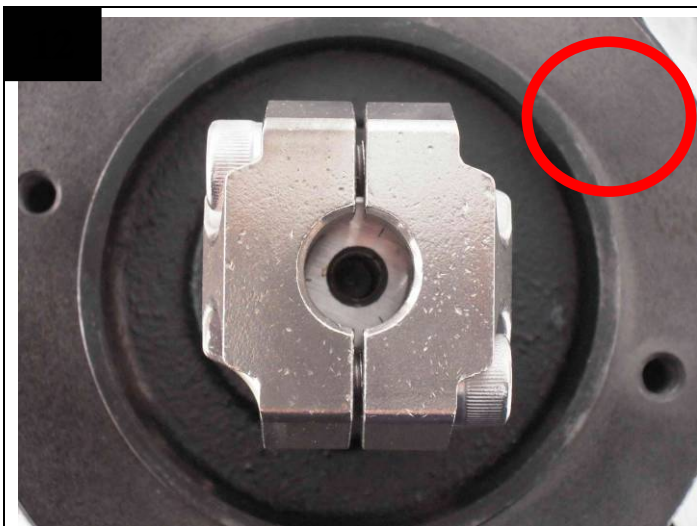
Set the coupling to the middle position (between top and bottom position.)



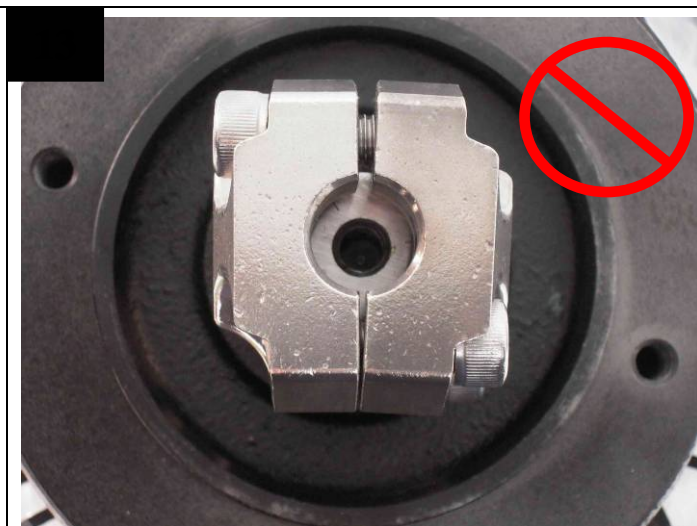
Tighten up the stud bolts on coupling.
※torque 180 kgf · cm



The clearance between the two half couplings must be even.



Picture above is the correct clearance.



Picture above is the wrong clearance.



Tighten up the stud bolts on mechanical seal.
※torque 45 kgf · cm



Install the coupling cover.
※torque 20 kgf · cm