



WALRUS®

TS-Q Series Auto Pressure Control Pump

ISO 9001



Model Code

TS800 Q

AUTO PRESSURE CONTROL

MODEL NAME

Product Description

The Walrus TS400Q & TS800Q are compact booster systems consisting of TS pump and auto pressure controller. The controller provides constant pressure and flow which will automatically start and stop the pump when the tap is open and close. It also provides dry run and cycling protection.

Applications

Boosting pressure for:

- * Homes where the incoming city water pressure is too low
- * Portable water supply or underground water
- * Washing/cleaning system
- * Irrigation system

Design Features

- * Centrifugal, multistage pump
- * TEFC motor with Class B insulation
- * Dry run and cycling protection
- * Pressure control with adaptive cut-in pressure
- * Mechanical Shaft Seal made of Ceramic + Carbon + Viton
- * Automatic start and stop when the faucet is turned on and off.

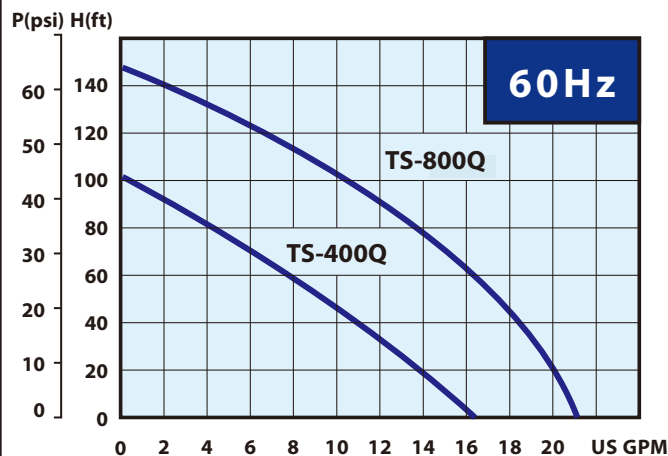
Benefit

- * Quick and easy installation
- * Low maintenance
- * Compact design
- * Quiet operation with noise level as low as 65 db(A)
- * Pump meets CSA-C/US and CE

Operation Limits

- * Max. Flow rate : 21.1 GPM
- * Max. total head: 147.6 Ft (64 psi)
- * Preset activation pressure : 30~40 psi
- * Max. liquid temperature: 104 °F
- * Max. ambient temperature: 104 °F
- * Max. system pressure: 120 psi
- * Inlet size: 1" NPT
- * Outlet size: 1" NPT

Hydraulic Performance Curves (Flood suction)



Walrus America Inc



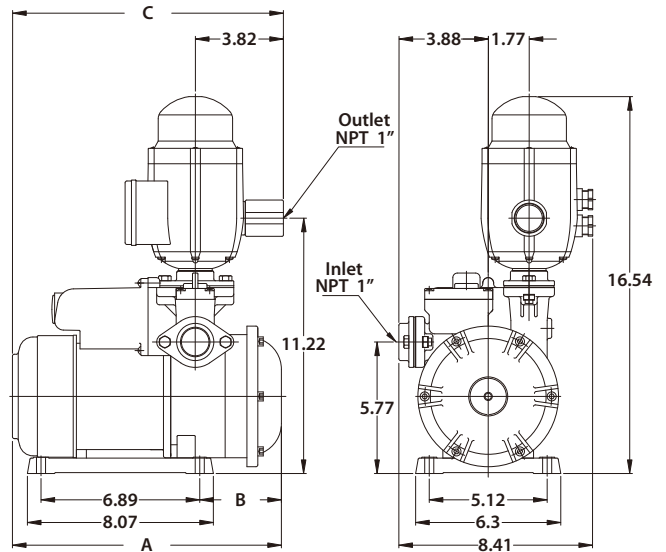
WALRUS®

TS-Q Series Auto Pressure Control Pump

Construction

Part name	TS400Q	TS800Q
Pump casing	glass filled noryl	
Filling plug	NyLon	
Outlet & Inlet	SUS 304	
Intermediate Chamber	glass filled polycarbonate	
Impeller	glass filled noryl	
Mechanical Seal	Ceramic + Carbon + Viton	
Shaft	SUS 316	
Motor Shell	Coating Steel	Aluminum alloy

Dimensions: (in.)



Suction Lift Performance Table

Model	Discharge pressure in psi	Capacity in US gallons per Minute					
		Suction Lift in Feet					
		0	5	10	15	20	25
TS400Q	10	13.5	12.7	10.2	11.2	10.5	9.7
	20	10.0	9.2	8.5	7.5	6.7	6.0
	30	6.2	5.2	4.2	3.2	2.5	1.5
TS800Q	20	17.7	17.2	16.7	16.2	15.5	14.7
	30	15.2	14.5	13.7	13.0	12.2	11.5
	40	11.7	11.0	10.2	9.0	8.2	7.0
	50	7.5	6.5	5.5	4.5	3.2	2.0

Model	A (in.)	B (in.)	C (in.)
TS400Q	11.69	3.54	11.75
TS800Q	13.82	3.48	13.56

Specification

Model	Ph (Ø)	Cycle (Hz)	Power (HP)	Voltage (V)	Max Amp's (A)	Preset Pressure (psi)	Max Pressure (psi)	Max Flow (GPM)	N.W. (lbs)
TS400Q	1	60	½	115 or 230	6.0 or 3.0	30	44	15.8	21.6
TS800Q	1	60	1	230	5.5	40	64	21.1	28.3

Warning: The inlet pressure will add to the pump max pressure to be the total system pressure. When the total system pressure exceeds the local code limits for home pressure, it is required to install a pressure reducing valve to reduce the incoming pressure.