



# WALRUS®

## PW Series 60Hz SUBMERSIBLE PUMP

ISO 9001



### Applications

- Water circulating of ponds
- Lawn sprinkling
- Garden watering and car washing
- Dewatering the basement
- Trenches
- Excavation and construction sites

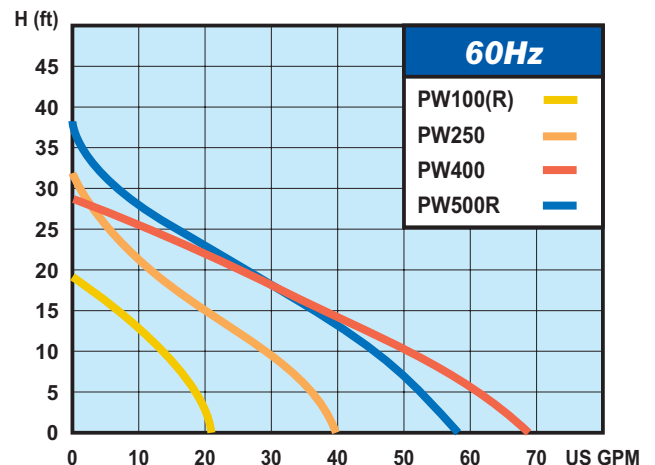
### Features

1. Motor with built-in temperature protection.
2. Sturdy composite construction and glass-filled polypropylene housing resist corrosion.
3. Efficient cooling design keeps motor running cooler for longer life.
4. Compact size and light weight fit into out of the way places.

### Suitable Liquids

1. Suitable to pumping clean, non-aggressive water and slightly dirty (grey) wastewater.
2. When pumping salt water such as sea fish bleeding, please select PW100R and PW500R.

### Hydraulic Performance curve



**Walrus America Inc**

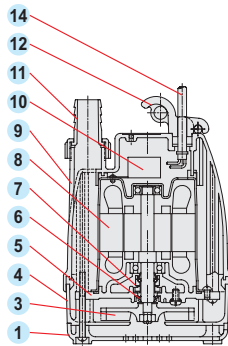


# WALRUS®

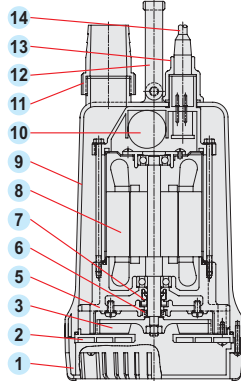
## PW Series 60Hz SUBMERSIBLE PUMP

### Sectional drawing

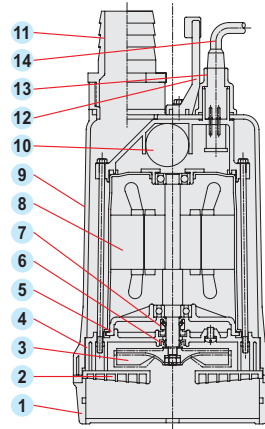
PW100



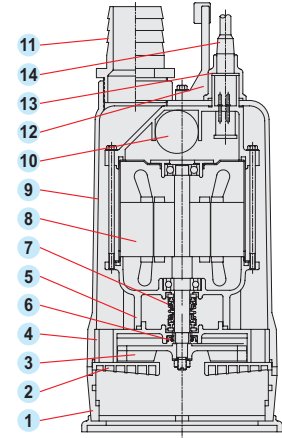
PW250



PW400

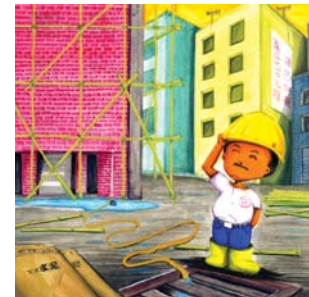


PW500



### Components

No.	Description	No.	Description
1	Strainer	8	Motor
2	Suction Cover	9	Pump Shell
3	Impeller	10	Capacitor
4	Current Conduction	11	Outlet
5	Flange Bracket	12	Handle
6	Oil Seal	13	Cable Fixed Cap
7	Mechanical Seal	14	Cable Wire



### Specifications

Type	Outlet Diameter In.	Output W	Volt V	Amp's A	Maximum		Dimensions D x H (In.)	Cable Wire Cxmm²xft	Box Dimns LxWxH (In.)	N.W. lbs	G.W. lbs
					Head ft	Capacity GPM					
PW100 PW100R	1"	100	115 or 230	1.2 or 2.4	19.6	21.1	6.10x 8.98	3Cx0.75x13	7.1x7.1x10.2	9.2	10.1
PW250	1½"	250	115 or 230	5.6 or 2.8	32.8	39.6	6.42x13.78	3Cx1.25x16	7.9x6.7x13.5	15.4	16.3
PW400	2"	400	115 or 230	7.0 or 3.5	29.5	68.7	7.20x15.35	3Cx1.25x16	7.9x7.2x15.8	17.6	18.7
PW500R	2"	500	115 or 230	7.0 or 3.5	39.4	55.4	7.28x15.75	3Cx 2 x16	9.1x7.7x16.1	20.3	21.2

**Walrus America Inc**  
 9808 Whithorn Drive, Houston, TX 77095  
 Phone: (281) 861-7738 Fax: (281) 861-7776  
 Web: www.walrusamerica.com

All specifications are subject to change without notice. 000