

Sytemflo



*The Manual for Operating
and Maintenance*

GPD series Single-phase pipeline screened electric pump



GPD *series*

Single-phase pipeline screened electric pump

Content

- 1、 Conditions of operation _____ ▶
- 2、 Installation _____ ▶
- 3、 Maintenance and repair _____ ▶
- 4、 Limited Warranty _____ ▶



***The Manual for Operating
and Maintenance***

The GPD-SFC type

The GPD type

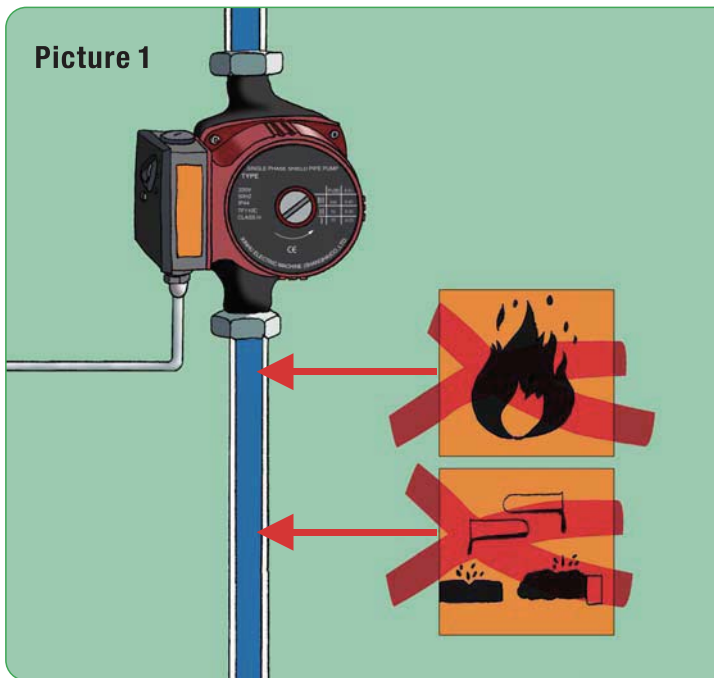
GPD series

Single-phase pipeline screened electric pump

1、 Conditions of operation

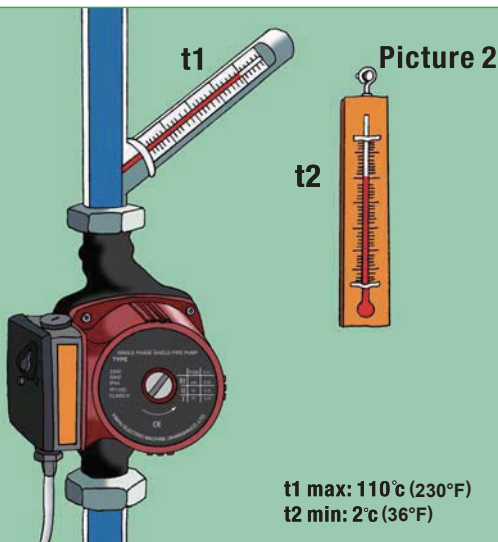
- The pump is lubricated and cooled by the liquid being pumped. It will cause severe damage when the pump runs dry for over 10 seconds. Refer to Picture 1.

Picture 1





- The liquid temperature should be maintained between 2°C (36°F) to 110°C (230°F) as shown in Picture 2.



TF110	t_1 °F	36	104	140	176	194	212	221	230
	Max. t_2 °F	32	104	140	176	158	140	131	95

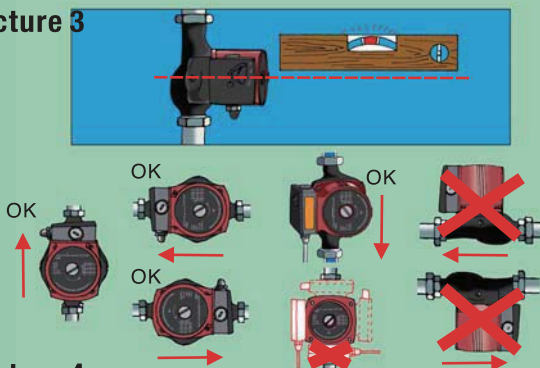
GPD series

Single-phase pipeline screened electric pump

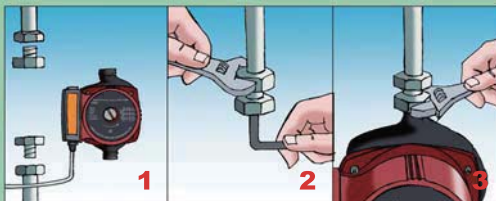
2. Installation

- Follow the arrow on the pump flange for direction of water flow. It may be installed in vertical or horizontal piping; however the motor shaft must be always in horizontal position. Refer to Picture 3.
- The connection should be installed according to the procedures as shown in Picture 4.

Picture 3

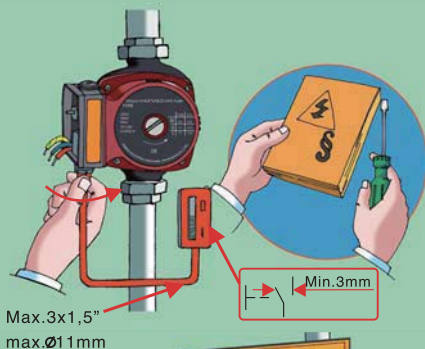


Picture 4

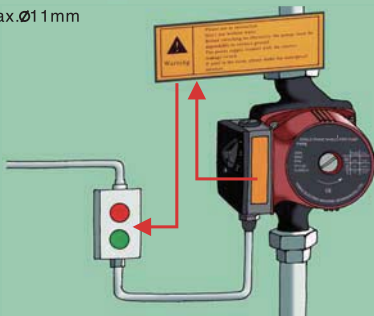




- The electrical connection must be performed by a qualified electrician in accordance with the safety code and local regulations. Refer to Picture 5.
- Read the warning labels and instructions before installation. Refer to Picture 6.



Picture 5



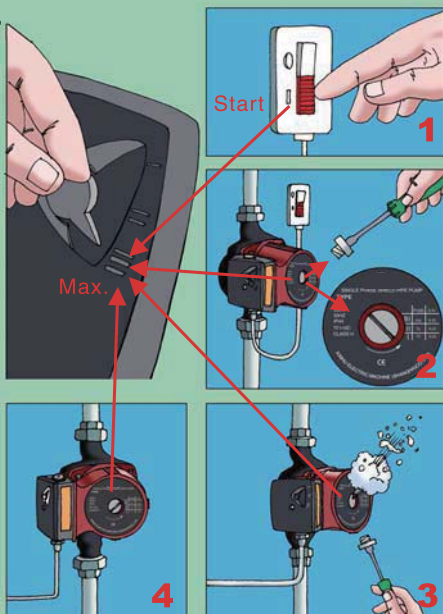
Picture 6

GPD series

Single-phase pipeline screened electric pump

- After installation, the piping system must be vented. Follow the procedures as shown in Picture 7.

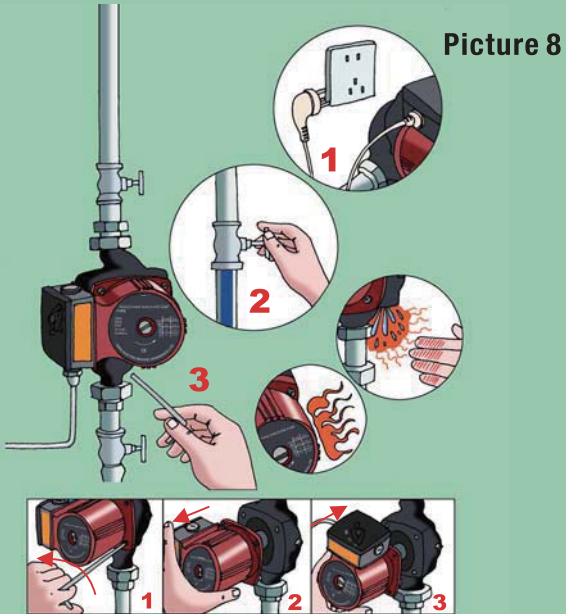
Picture 7





3、 Maintenance and repair

- Maintenance and repair should be carried out by a professional according to the procedures in Picture 8.



GPD series

Single-phase pipeline screened electric pump

• *Trouble shooting chart*

Problem	Cause	Remedy
Pump doesn't run	<ul style="list-style-type: none">• Power supply is not connected	<ul style="list-style-type: none">• Check the fuse of the electrical connection
	<ul style="list-style-type: none">• Capacitor is damaged• Bearing blocked while the pump is attempted to run	<ul style="list-style-type: none">• Replace capacitor• Run it at a higher speed shortly or rotate the shaft by inserting a screwdriver into the slot at the motor shaft end
	<ul style="list-style-type: none">• There is impurity in pump	<ul style="list-style-type: none">• Disconnect power and clean the pump
Noise in the system	<ul style="list-style-type: none">• The flow is too high• Air in the pump	<ul style="list-style-type: none">• Run at a slower speed• Vent the pump
Noise in the pump	<ul style="list-style-type: none">• Air in the pump• The inlet pressure is too low	<ul style="list-style-type: none">• Vent the pump• Increase the inlet pressure



Limited Warranty

Products manufactured by Walrus America Inc are warranted to the first user only to be free of defects in material and workmanship for a period of 12 months from date of installation, but no more than 24 months from date of shipment, Walrus' liability under this warranty shall be limited to repairing or replacing at our election, without charge, FOB Walrus' distribution center or authorized service agent. Walrus will not be liable for any cost of removal, installation, transportation or any other charges that may arise in connection with warranty claim.

The warranty period commences on the date of original purchase of the equipment, Proof of purchase and installation date, failure date, and supporting installation data must be provided when claiming repairs under warranty.

This warranty is subject to due compliance by the original purchaser with all directions and conditions set out in the installation and operating instructions. Failure to comply with these instructions, damage or breakdown caused by fair wear and tear, negligence, misuse, incorrect installation, inappropriate chemicals or additives in the water, inadequate protection against freezing, rain or other adverse weather conditions, corrosive or abrasive water, lightning or high voltage spikes or through unauthorized persons attempting repairs are not covered under warranty.

Walrus will not be liable for any incidental or consequential damages, losses, or expenses, arising from installation, use, or any other causes. There are no express or implied warranties, including merchantability or fitness for a particular purpose, which extend beyond those warranties described or referred to above.

Certain states do not permit the exclusion or limitation of incidental or consequential damages or the placing of limitations on the duration of an implied warranty, therefore, the limitations or exclusions herein may not apply. This warranty sets forth specific legal rights and obligations, however, additional rights may exist, which may vary from state to state.

Supersedes all previous publications



Walrus America Inc

2022 Hempstead Road, Suite #30, Houston, TX 77065

Phone: 281-955-8035 Fax: 281-955-8037

Web: www.walrusamerica.com

3-Speed Circulator



Walrus America Inc

20220 Hempstead Road, Suite #30, Houston, TX 77065

Phone: 281-955-8035 Fax: 281-955-8037

Web: www.walrusamerica.com